



SketchData

www.SketchData.com

SketchUp Reporting Extension

Compatibility

- SketchUp 2016 or newer—Make or Professional
- Windows or Mac OS (Mac OS has reduced features)

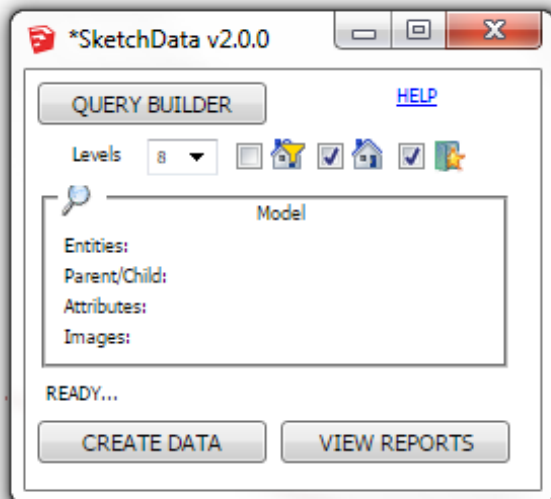
Installing extensions manually in SketchUp Preferences

The extension is packaged as an .rbz file that you can install manually. Please follow these steps:

1. In SketchUp, select **Window > Extension Manager**. The Extension Manager window appears.
2. Click the **Install Extension** button.
3. In the Open dialog box that appears, navigate to the .rbz file saved to your computer, select the file, and click **OK** (Microsoft Windows) or **Open** (Mac OS X).

When SketchUp warns you about installing only extensions from trusted sources, click **Yes** to proceed and install your extension.

Report Dialog



CREATE DATA - Builds datasets for Model

VIEW REPORTS - Open Report Viewer/Designer

QUERY BUILDER—Entity dataset export options

HELP—View this online document

- LEVELS**—Levels of nested components to export (1 thru 8)
- IMAGES SELECT**—Create thumbnail images for components having “DataImage=true” attribute *
- IMAGES ALL**—Create thumbnail images for ALL components/ groups in model *
- FORMULAS**—Exports formulas on Dynamic Component or “DC” attributes

*(Creating ALL images can be a long process on large models, IMAGE SELECT method is recommended for faster results)

*(Exporting images refreshes Component Thumbnails and your model will indicate changes have been made)

*(The Mac version of SketchUp does not support Thumbnail images. The IMAGES SELECT and IMAGES ALL features will be disabled on Mac OS)



SketchData

www.SketchData.com

SketchUp Reporting Extension

Query Builder Dialog

DATASET DEFAULT–View information and attributes already in Entity Dataset

DELETE ROW–Delete a row from the export list

ADD ROW–Add a new attribute to the Entity Dataset (entries are case sensitive)

SAVE CHANGES–Save changes to a schema file, for future exports

This dialog allows for the User to add/remove Component attributes to the Entity dataset.

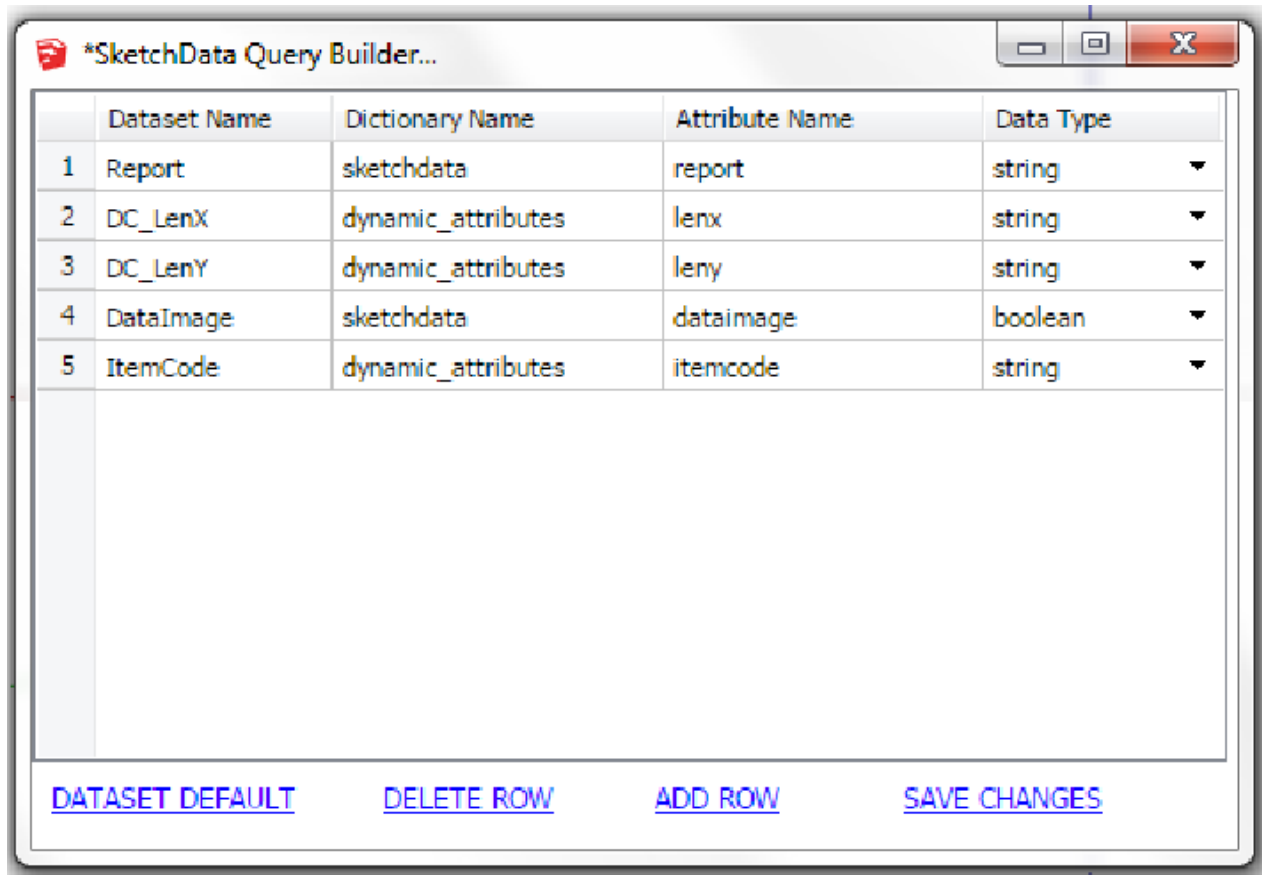
[Dataset Name] -Name for Attribute in the Dataset and Report design

[Dictionary Name] -Name of Attribute Dictionary used in SketchUp

[Attribute Name] -Name of Attribute in the Dictionary used in SketchUp

[Data Type] -Define the type of data for the Attribute in the Dataset

*(Dictionary Name and Attribute Name are case sensitive)



DATASET DEFAULT–View information and attributes already in Entity Dataset

DELETE ROW–Delete a row from the export list

ADD ROW–Add a new attribute to the Entity Dataset (entries are case sensitive)

SAVE CHANGES–Save changes to a schema file, for future exports



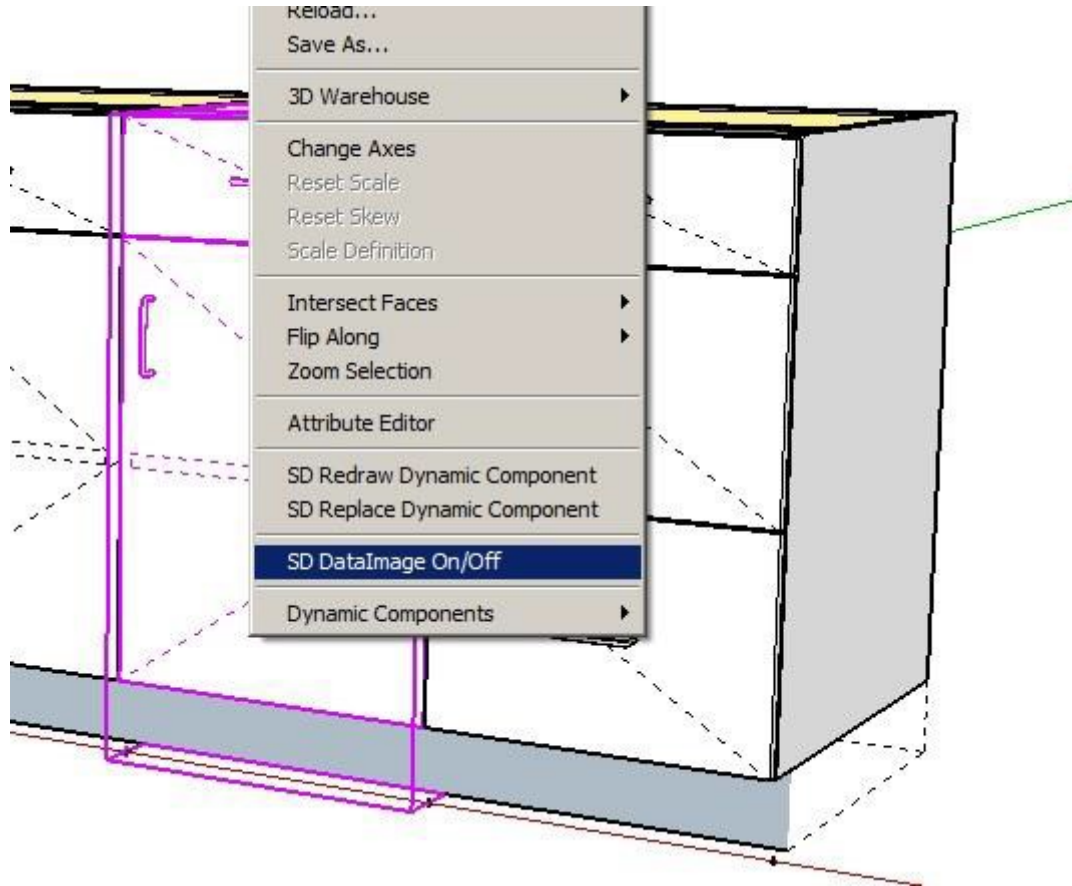
SketchData

www.SketchData.com

SketchUp Reporting Extension

DatImage Context Menu

Right Clicking a Component or Group opens a Context Menu for Toggling the “DataImage” attribute



Right Clicking a Component or Group allows the User to toggle “On/Off” the “DataImage” attribute which is used by the IMAGES SELECT option

IMAGES SELECT

This attribute allows for Users to selectively define which Components/Groups to generate thumbnail images



SketchData

www.SketchData.com

SketchUp Reporting Extension

Report Viewer

This window displays a list of Reports and the Preview for each of the reports. The report Preview can be Printed, Saved , or modified with the Design function.

The screenshot shows the SketchData Report Viewer window. The title bar reads '*SketchData Report Viewer...'. The interface includes a menu bar with 'Print', 'Save', and 'Design' options. A navigation bar shows 'Page 1 of 17' and a search bar. The main content area displays a report titled 'Playground Entity List' with a date of '4/4/2017'. The report features a 3D rendering of a colorful playground structure. Below the rendering is a table of items:

Item Code	Definition	Component
BRIDGE-10-Grey-Orang	Bridge	Bridge
BUBBLE-Red-Blue Trans	Play Grow Bubble View Port	Play Grow Bubble View Port
BUBBLE-Red-Blue Trans	Play Grow Bubble View Port	Play Grow Bubble View Port
BUBBLE-Red-Blue Trans	Play Grow Bubble View Port	Play Grow Bubble View Port

The left sidebar contains a list of report thumbnails: 'Blank Report', 'Playground Entity List', 'Playground Entity List Filter', and 'Playground Labels'. A large 'TRIAL' watermark is visible across the center of the report preview.



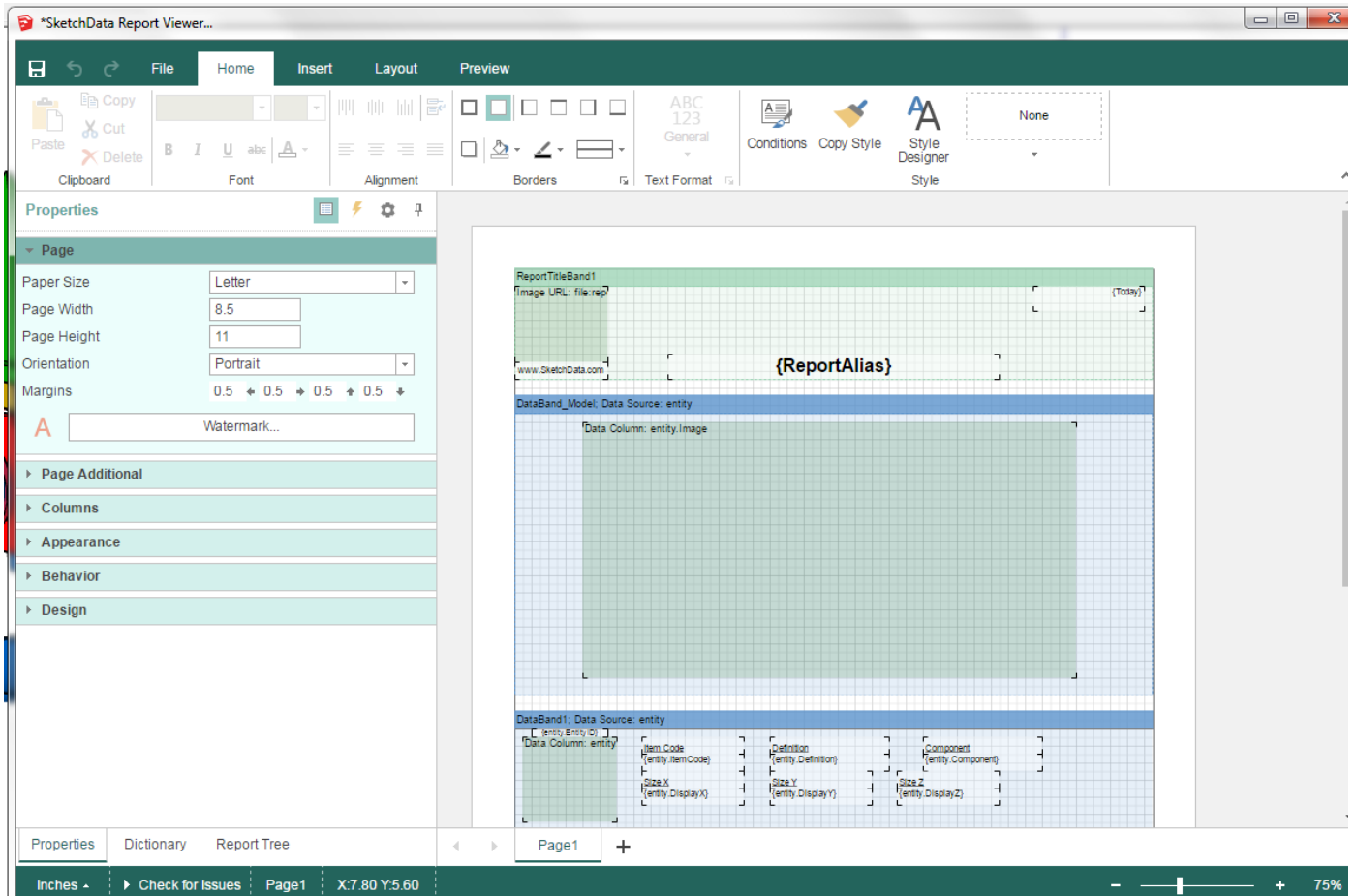
SketchData

www.SketchData.com

SketchUp Reporting Extension

Report Designer

This window allows for the editing of the Report design. The Reports have a .MRT extension and are saved in the "sd_sketchdata_report\viewer\reports" subdirectory of the plug-ins subfolder.





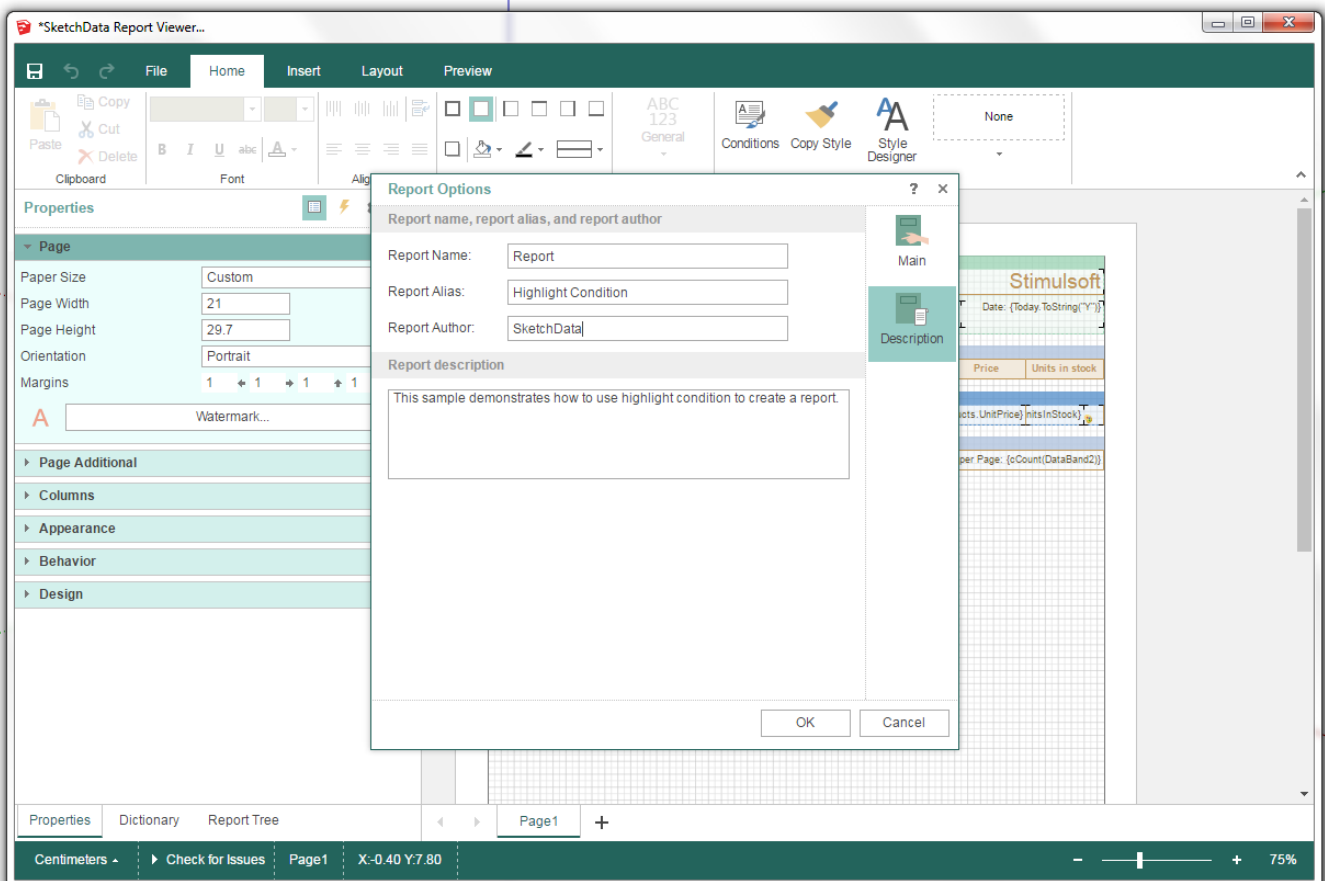
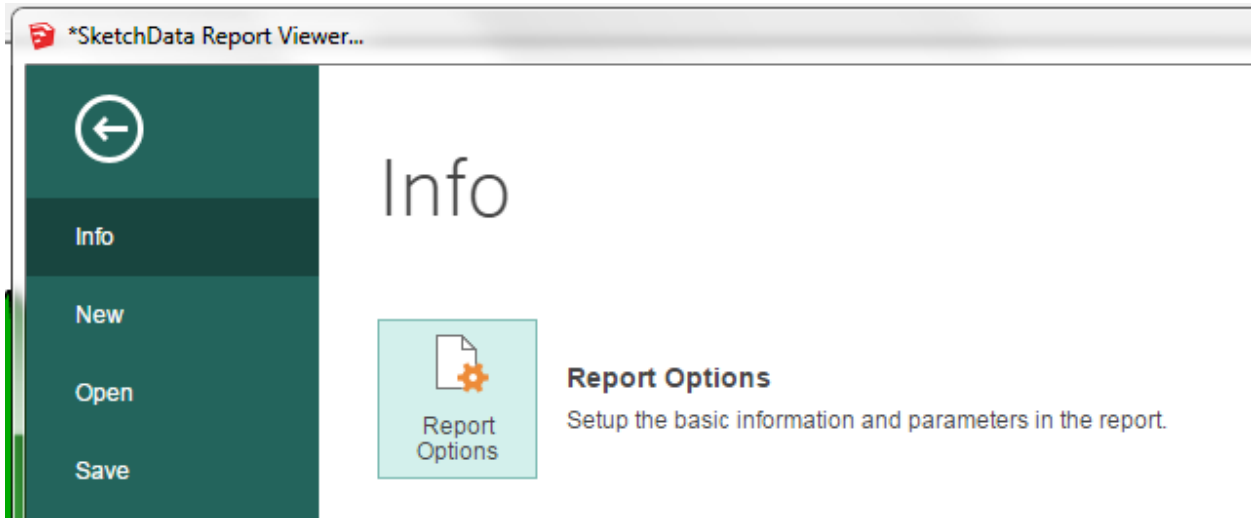
SketchData

www.SketchData.com

SketchUp Reporting Extension

Report Designer (Naming the Report)

The Report Name (which will be the file name) and Report Alias can be set in the Report Designer using the File => Info => Report Options dialog. To perform a "Save-As" simply change the Report Name and click the Save button.





SketchData

www.SketchData.com

SketchUp Reporting Extension

Data Dictionary

The report data is stored in data_sketchdata.xml, found in the reports subdirectory. Below is the data dictionary for the Entity, Attribute, and ParentChild elements.

Element: ENTITY

Name	Type	Description
EntityID	Integer	Unique ID of Entity inside SketchUp
Definition	Text	Name of definition for components
Component	Text	Component instance name
Name	Text	Unique name from the Entity Info dialog
Layer	Text	Layer entity if placed on
Visible	Boolean	If the entity visible
Classification	Text	IFC Classification information
ClassType	Text	IFC Classification information
ClassValue	Text	IFC Classification information
Qty	Double	Quantity of Entity
Total	Double	Total quantity of Entity
DC_Units	Text	Dynamic Component units
DC_Name	Text	Dynamic Component name
LenX	Double	Length in X
LenY	Double	Length in Y
LenZ	Double	Length in Z
DisplayX	Text	Display value length X
DisplayY	Text	Display value length Y
DisplayZ	Text	Display value length Z
PosX	Double	Position in X
PosY	Double	Position in Y
PosZ	Double	Position in Z
Image	Image	Binary image data



SketchUp Reporting Extension

Data Dictionary

The report data is stored in data_sketchdata.xml, found in the reports subdirectory. Below is the data dictionary for the Entity, Attribute, and ParentChild elements.

Element: ATTRIBUTE

Name	Type	Description
EntityID	Integer	Unique ID of Entity inside SketchUp
Dictionary	Text	Attribute Dictionary for attribute
Attribute	Text	Attribute name
Value	Text	Value of attribute
Type	Text	Data type for attribute
DisplayName	Text	Display name of attribute
DisplayLabel	Text	Display label on form for attribute
DisplaySort	Text	Sort order for attribute
Formula	Text	Formula for attribute
DisplayUnits	Text	Display data type for attribute
DisplayType	Text	Type of display method for attribute
DisplayValue	Text	Display value for attribute
ListValue	Text	List values if selection dropdown
ListDisplay	Text	List display values if selection dropdown

Element: PARENTCHILD

Name	Type	Description
ParentID	Integer	Parent Entity ID
ChildID	Integer	Child Entity ID
Visible	Boolean	Is child entity visible in this parent